



ISR Physical Therapy

FCE TIP OF THE MONTH
March, 2011

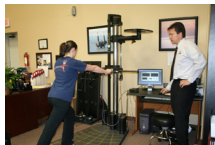


The difference between an impairment rating and an FCE

The AMA Guides to the Evaluation of Permanent Impairment was developed out of a series of 13 separate publications in the Journal of the American Medical Association from 1958 to 1970. The First Edition of the Guides was published in 1971 and it is now in its 6th Edition. Impairment percentages or ratings are estimates that reflect the severity of the medical condition and the degree to which the impairment decreases an individual's ability to perform common activities of daily living, *excluding work*. The Guides state "complexity of work activities requires individual analyses." Impairment assessment is a necessary step for determining disability.



An FCE is a systematic battery of tests used to determine an individual's ability to perform duties as they relate to general or specific employment and if any impairment(s) translate into disability. The FCE is a necessary step in determining disability. Using the FCE, IME and Impairment rating in combination will provide a thorough assessment of the individual for return to work and case settlement purposes.



Upcoming Events:

ISR Houma West: May 20th, Seminar

"The Three R's of Managing your Workforce Injury Claims- *Reduce, Retain, Return*"

ISR Harahan: September 15th, Seminar

"Key Concepts for Successful Return to Work"

*More details to follow.

Houma West

478 Corporate Dr.
Houma, LA 70360
985-872-5911

Houma East

814 Grand Caillou Rd.
Ste. 17
Houma, LA 70363
985-346-0383

New Orleans

1516 River Oaks Rd. W.
Harahan, LA 70123
504-733-2111

www.isrphysicaltherapy.com



ABOUT OUR EVALUATORS:



Richard W. Bunch PhD, PT, CBES
Founder and CEO, of ISR Institute , Partner of ISR Physical Therapy of Houma & Harahan

Dr. Bunch is founder and CEO of ISR Institute. He is a nationally renowned professional speaker, author and consultant on the topics of wellness, ergonomics, injury prevention and injury management.



Trevor D. Bardarson PT, OCS, CSCS
Clinic Director, Houma, Partner of ISR Physical Therapy of Houma & Harahan

Trevor is a Board Certified Orthopedic Specialist and Certified Behavioral Based Ergonomic Specialist. He is also Certified in Mechanical Diagnosis and Therapy of the Spine by the McKenzie Institute USA, is a Certified Strength and Conditioning Specialist, and is currently the Training Director for the Worksaver FCE Protocol. Mr. Bardarson is also the Vice President of Clinical Operations for Industrial Safety and Rehabilitation Institute and Clinic Director/Partner of ISR Physical Therapy of Houma, LLC.



Marc Cavallino, MPT, OCS
Clinic Director & Partner of ISR Physical Therapy Harahan

Marc completed his Masters of Physical Therapy at Emory University in 2001. He has had the opportunity since his graduation to work with a variety of orthopedic conditions and is experienced in FCEs, work conditioning, sports injuries as well as back and neck injuries.